

CO-OP MEMBER PROGRAMS, REBATES & INCENTIVES



pa ulding putnam
ELECTRIC COOPERATIVE, INC
Your Touchstone Energy® Cooperative



HVAC SYSTEMS

Geothermal heating & cooling rebate (\$450* bill credit)

Installation of a new geothermal system with a load management switch. Equipment installed shall be in compliance with ENERGY STAR® requirements for both EER and COP minimums at the time of installation.

| Efficiency Requirements | EER | COP |
|--------------------------|------|-----|
| Closed loop water-to-air | 17.1 | 3.6 |
| Open loop water-to-air | 21.1 | 4.1 |

Air source heat pump | air conditioner rebate (\$300* BILL CREDIT)

Installation of a new air source heat pump system with a load management switch installed. Equipment installed shall be in compliance with ENERGY STAR® requirements for both SEER and HSPF minimums **at the time of installation.**

| Efficiency Requirements | SEER | HSPF |
|-------------------------|------|------|
| Split system | 15.0 | 8.5 |
| Package system | 15.0 | 8.2 |

**Not all systems are able to accept having a switch installed. If your system does not accept a switch, this will reduce the rebate by \$100.*

Ductless mini-split heat pump rebate (\$200 bill credit)

Installation of a new or replacement all-electric ductless or mini-split heat pump system. No load management switch required. Equipment installed shall be in compliance with ENERGY STAR® requirements for both SEER and HSPF minimums **at the time of installation.**

| Efficiency Requirements | SEER | HSPF |
|-------------------------|------|------|
| Ductless mini split | 15.0 | 8.5 |

ELECTRIC WATER HEATERS

Electric water heater rebate (\$350 bill credit)

Installation of a new electric water heater that has a 50-gallon or larger tank capacity and an energy factor of 0.91 or higher, with a load management switch installed.

Note: All rebates require a copy of the paid invoice and the completion of the appropriate rebate forms. All rebates applicable within current calendar year on a first-come first-served basis. Rebates are current as of March 1, 2024.

ENERGY STAR APPLIANCE REBATES

Refrigerator or freezer (\$100 bill credit)

Purchase a new ENERGY STAR® rated refrigerator or stand-alone freezer sized 10-30 cubic feet. Purchase receipt and proof of ENERGY STAR certification required. Must include ENERGY STAR logo or statement of ENERGY STAR certification.



WEATHERIZATION REBATES

Insulation and air sealing (up to \$600 bill credit)

Installation of insulation and/or air sealing in existing electrically heated residential homes. Not applicable for new construction or room additions. Minimum R-16 for exterior walls, R-38 for attic, R-10 exterior basement walls, R-10 crawlspace. All work must be performed by a licensed contractor.

ELECTRIC VEHICLE (EV) REBATES

Level 2 charger (\$200 bill credit)

Installation of a new, UL-listed electric vehicle (EV) Level 2 (240-volt) charger. Maximum of two rebates per residential member or six per commercial/industrial facility. Encourages EV charging during off-peak hours.

LOAD MANAGEMENT SWITCHES

(\$25 bill credit for installation, \$5 recurring during peak months)

The radio-controlled switch (RCS) is an essential part of the load management program. Whenever there is a risk of reaching a new peak, the RCS attached to the applicable appliances are activated, temporarily interrupting electricity. Members receive a \$25 bill credit when a switch is installed on their air conditioning system. Members also receive a \$5 monthly credit (June - August) once the switch is installed.

WATER HEATER RADIO-CONTROLLED SWITCH

A radio-controlled switch (RCS) is a device that is installed on electric water heaters to help reduce our peak electric load during times of high electric use. When the cooperative is notified that the demand for electricity is reaching an all-time high, a peak alert is issued and a signal is sent to the radio-controlled switch, which turns off the heating elements for a period of time. Today's energy-efficient water heaters are capable of holding heat for extended periods of time, so the elements can be off for a period with little or no inconvenience.

This program has resulted in significant savings to the cooperative and the members. A RCS wired to a water heater is typically located at the breaker panel or near the water heater.

COMMERCIAL AND INDUSTRIAL REBATES

(up to \$15,000 rebate)

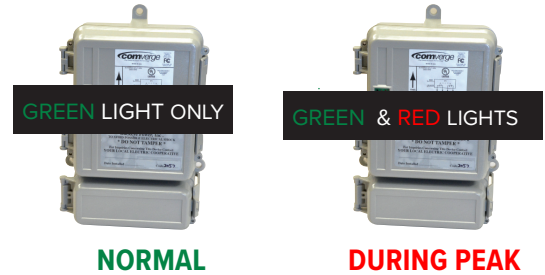
PPEC offers a commercial lighting rebate for replacing inefficient internal lighting in an existing facility. Re-lamping of existing fixtures is allowable for rebate only if it includes a technology upgrade (e.g., incandescent lamp to CFL; fluorescent lighting to LED). Relamping to a lower wattage of the same general type of bulb is not applicable for this program. Facility must be used a minimum of 1,800 hours per year.

A/C RADIO-CONTROLLED SWITCH

A radio-controlled switch (RCS) is installed on an air conditioner, heat pump, or geothermal system to help reduce our peak electric load during times of high electric use. When the cooperative is notified that the demand for electricity is reaching an all-time high, a Peak Alert is issued and a signal is sent to the radio-controlled switch, which cycles the air conditioner's compressor off for 8 to 12 minutes each half hour. The air conditioner's fan continues to operate during this period so comfort in the home is maintained. The switch operates similar to how a thermostat cycles the compressor off and on when it reaches a set temperature. This does not control your thermostat or harm your cooling system.

This program has resulted in significant savings to the cooperative and members. Window air conditioning units are not eligible. A RCS is typically located next to the air conditioning system.

LOAD CONTROL: RADIO-CONTROLLED SWITCH (RCS)



IF BREAKER IS TURNED OFF, RCS WILL GO THROUGH A 10-MINUTE START SEQUENCE WHERE LIGHTS ALTERNATE ON/OFF



LEARN MORE

For more information, including additional terms and conditions, visit our website at www.PPEC.coop/rebate-programs. You can also call our office at 1-800-686-2357.



paulling putnam
ELECTRIC COOPERATIVE, INC
Your Touchstone Energy® Cooperative

www.PPEC.coop | 401 McDonald Pike, Paulding, OH 45879