



# Renewable Energy



pa ulding pu tnam  
ELECTRIC COOPERATIVE, INC  
Your Touchstone Energy® Cooperative 

## What to expect when installing a solar system

Step-by-step process if you plan to interconnect with PPEC's grid system

1. Before choosing a solar system, be sure that your home is as energy efficient as possible; you may want to get a home energy audit from your cooperative to help determine which improvements will be most beneficial. Investing in energy efficiency provides a faster return on your investment than installing solar does. By improving your home's energy efficiency first, you will reduce your overall energy use and may reduce the size of solar PV system needed – which saves more money in the long run.

2. Make sure your roof is in tip-top shape. If yours is older, you may need to repair or replace it before installing solar (and remember, a solar PV system may last up to 30 years, so be sure your roof will last, too).

Research solar and solar contractors thoroughly before investing in a system; get at least three quotes before choosing one. Be sure to work closely with your cooperative for advice and assistance on interconnecting with the grid. They can provide information and history of your energy use that can help you size your system and evaluate savings. Our staff has experience working with other members and solar contractors.

3. Call PPEC before you go forward with the project, so you have a complete understanding of the billing changes.

4. When you have decided what solar contractor you want to use, send in the proper application form filled out completely with the application fee of \$375. *(continued on back)*

**CALL OUR ENERGY ADVISER TODAY: 1-800-686-2357**

5. After the cooperative receives the application form and fee:

a. Engineering will review the specifications of the proposed system and will conduct a system impact study to be sure our equipment can handle the power coming on our system.

b. The cooperative will review your last 3 years of energy use and confirm it falls within our policy of sizing up to 80% max of your previous 3 years' 12-month average. If the system falls within our parameters, you will get approval to go forward with constructing the system.

6. The interconnect agreements must be completed, signed, and turned in to PPEC before construction begins. Typically, the interconnect agreements are handled by the Solar Dealer.

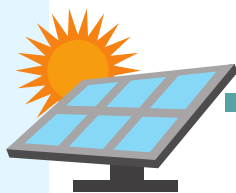
7. When construction is complete and all forms have successfully been submitted, PPEC will come to the job site, inspect the disconnect unit, and exchange the meter with a bi-directional meter used for net billing.

8. At this point, you are all set to start producing solar power that will offset your current electric load. Feel free to reach out to PPEC at any time with any questions – we're here for you!



## What NOT to expect with a solar system integrated with PPEC

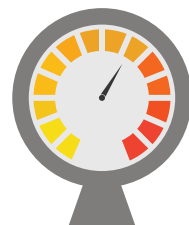
- Low upfront costs (beware of deals with solar contractors that sound too good to be true)
- A quick payback or return on investment
- The ability to “make a profit” off your solar power
- The ability to be completely “off the grid” (especially if you still want electricity when the sun isn't shining, it's cloudy, or at night)
- Electricity during a PPEC outage (unexpected energized lines are unsafe for our crews working on lines to restore power)
- A lower bill every month (sometimes this doesn't happen, depending on weather and your energy use)



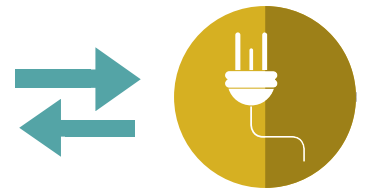
The solar panels receive energy from the sun and with an invert-er, make it available for use at your home.



The energy is used at your home.



A bi-directional meter measures the power being purchased from Paulding Putnam Electric Co-op and the excess created at your home.



Net Billing allows renewable members to generate electricity for personal use and sell any excess energy to the co-op at wholesale or "avoided cost" prices while purchasing power at the retail rate.